

Chocolati - Seasalted Caramel



Nutrients

	per 100g	per 100 g serving
Energy	1894.8kJ	1894.8kJ
Energy	452.9kcal	452.9kcal
Fat	23.6g	23.6g
of which saturates	17.6g	17.6g
Carbohydrate	25.9g	25.9g
of which sugars	52.0g	52.0g
Added Sugar	0.0g	0.0g
Fibre	2.0g	2.0g
Protein	4.2g	4.2g
Salt	5.1g	5.1g
Sodium	2006.1mg	2006.1mg

Pack Size

Pack size	100.0g
Number of servings	1

Graphics

per portion (100g)

SERVES	ENERGY	FAT	SATURATES	SUGAR	SALT
1	1895kJ 453kcal	24g HIGH	18g HIGH	52g HIGH	5.1g HIGH
	23%	34%	88%	58%	85%

% of an adult's reference intake
Typical values per 100g: Energy 1895kJ/453kcal

Typical values	per 100 g	per 100g serving
Energy	1895kJ	1895kJ
	453kcal	453kcal
Fat	24g	24g
of which saturates	18g	18g
Carbohydrate	26g	26g
of which sugars	52g	52g
Protein	4.2g	4.2g
Salt	5.1g	5.1g

Nutrition Facts
 1 servings per container
Serving size 4oz (100g)

Amount per serving		450
Calories		
		% Daily Value*
Total fat	24g	30%
Saturated Fat	18g	88%
Trans Fat	0g	
Cholesterol	10mg	4%
Sodium	2010mg	87%
Total Carbohydrate	28g	10%
Dietary Fiber	2g	7%
Total Sugars	52g	
Includes 0g Added Sugars		0%
Protein	4g	
Vitamin D	0.1mcg	0%
Calcium	108mg	8%
Iron	3.2mg	20%
Potassium	240mg	6%

*The % Daily Value (DV) tells you how much a nutrient in a serving of food contributes to a daily diet. 2,000 calories a day is used for general nutrition advice.

Ingredients and Allergens

Sugar 42%, Cocoa Butter 24%, Whole **Milk** Powder 22.5%, Cocoa Mass 11.5%, Emulsifier, **Soya** Lecithin, Natural Vanilla Flavouring., Glucose Syrup 70%, Sweetened Condensed Skimmed Milk (Skimmed Milk, Sugar) 19% Hydrogenated Vegetable Fat 10%, Salt, Flavourings, Emulsifier: E471, Sea Salt, Sugar Based Print Decoration.

Allergen advice. For allergens, including cereals containing gluten, see ingredients in **bold**.

50%	50g	Callebaut Milk Chocolate
40%	40g	Callebaut Caramel Filling
5%	5g	Sea Salt
5%	5g	Seasalt caramel transfer

Notes

Chocolati - Pink Champagne



Nutrients

	per 100g	per 100 g serving
Energy	2318.0kJ	2318.0kJ
Energy	555.6kcal	555.6kcal
Fat	39.8g	39.8g
of which saturates	26.0g	26.0g
Carbohydrate	36.8g	36.8g
of which sugars	40.5g	40.5g
Added Sugar	0.0g	0.0g
Fibre	0.0g	0.0g
Protein	4.0g	4.0g
Salt	0.05g	0.05g
Sodium	18.4mg	18.4mg

Pack Size

Pack size	100.0g
Number of servings	1

Graphics

per portion (100g)

SERVES	ENERGY	FAT	SATURATES	SUGAR	SALT
1	2318kJ 556kcal 28%	40g HIGH 57%	26g HIGH 130%	41g HIGH 45%	0.05g LOW 1%

% of an adult's reference intake
Typical values per 100g: Energy 2318kJ/556kcal

Typical values	per 100 g	per 100g serving
Energy	2318kJ 556kcal	2318kJ 556kcal
Fat	40g	40g
of which saturates	26g	26g
Carbohydrate	37g	37g
of which sugars	41g	41g
Protein	4.0g	4.0g
Salt	0.05g	0.05g

Nutrition Facts
 1 servings per container
Serving size 4oz (100g)

Amount per serving		
Calories	560	
		% Daily Value*
Total fat	40g	51 %
Saturated Fat	26g	130 %
Trans Fat	0g	
Cholesterol	30mg	10 %
Sodium	20mg	1 %
Total Carbohydrate	37g	13 %
Dietary Fiber	0g	0 %
Total Sugars	41g	
Includes 0g Added Sugars		0 %
Protein	4g	
Vitamin D	0.3mcg	2 %
Calcium	174mg	15 %
Iron	0.2mg	2 %
Potassium	250mg	6 %

*The % Daily Value (DV) tells you how much a nutrient in a serving of food contributes to a daily diet. 2,000 calories a day is used for general nutrition advice.

Ingredients and Allergens

Sugar 46.5%, Cocoa Butter 29.5%, Whole **Milk** Powder 23.5%, Emulsifier: **Soya** Lecithin, Natural Vanilla Flavouring., Chocolati - White Ganache (Sugar 46.5%, Cocoa Butter 29.5%, Whole **Milk** Powder 23.5%, Emulsifier: **Soya** Lecithin, Natural Vanilla Flavouring., Cream, Alcoholic Beverage - Alcohol 80%, Water.), Sugar 48%, Cocoa Butter 27.5%, Whole **Milk** Powder 24%, Emulsifier: **Soya** Lecithin, Natural Vanilla Flavouring, Cream 24%, Marc De Champagne 7.0%, Sugar 6.5%, Concentrated Whey 3.0%, **Milk** Proteins., Cocoa Butter, Sugar, Emulsifier: **Soya** Lethicin, Colours: E100, E120, E171 (**Milk**).

Allergen advice. For allergens, including cereals containing gluten, see ingredients in **bold**.

50%	50g	Callebaut White Chocolate
25%	25g	Chocolati - White Ganache
45.5%	11.4g	Callebaut White Chocolate
45.5%	11.4g	Cream, fluid, heavy whipping
9%	2.25g	Etilfrutto
10%	10g	Marc De Champagne Cream
10%	10g	Cocoa butter
5%	5g	Pink Champagne Transfer

Notes

Chocolati -White Mint Crunch



Nutrients

	per 100g	per 100 g serving
Energy	1999.9kJ	1999.9kJ
Energy	478.0kcal	478.0kcal
Fat	25.8g	25.8g
of which saturates	17.5g	17.5g
Carbohydrate	55.5g	55.5g
of which sugars	50.9g	50.9g
Added Sugar	0.0g	0.0g
Fibre	0.2g	0.2g
Protein	3.8g	3.8g
Salt	0.01g	0.01g
Sodium	3.0mg	3.0mg

Pack Size

Pack size	100.0g
Number of servings	1

Graphics

per portion (100g)

SERVES	ENERGY	FAT	SATURATES	SUGAR	SALT
1	2000kJ 478kcal 24%	26g HIGH 37%	17g HIGH 87%	51g HIGH 57%	0g LOW 0%

% of an adult's reference intake
Typical values per 100g: Energy 2000kJ/478kcal

Typical values	per 100 g	per 100g serving
Energy	2000kJ 478kcal	2000kJ 478kcal
Fat	26g	26g
of which saturates	17g	17g
Carbohydrate	55g	55g
of which sugars	51g	51g
Protein	3.8g	3.8g
Salt	0.01g	0.01g

Nutrition Facts
 1 servings per container
Serving size 4oz (100g)

Amount per serving		
Calories	480	
% Daily Value*		
Total fat	26g	33%
Saturated Fat	17g	87%
Trans Fat	0g	
Cholesterol	25mg	8%
Sodium	0mg	0%
Total Carbohydrate	56g	20%
Dietary Fiber	0g	1%
Total Sugars	51g	
Includes 0g Added Sugars		0%
Protein	4g	
Vitamin D	0.2mcg	2%
Calcium	130mg	10%
Iron	0.2mg	2%
Potassium	189mg	4%

*The % Daily Value (DV) tells you how much a nutrient in a serving of food contributes to a daily diet. 2,000 calories a day is used for general nutrition advice.

Ingredients and Allergens

Sugar 46.5%, Cocoa Butter 29.5%, Whole **Milk** Powder 23.5%, Emulsifier: **Soya** Lecithin, Natural Vanilla Flavouring., Chocolati - White Ganache (Sugar 46.5%, Cocoa Butter 29.5%, Whole **Milk** Powder 23.5%, Emulsifier: **Soya** Lecithin, Natural Vanilla Flavouring., Cream, Alcoholic Beverage - Alcohol 80%, Water.), Sugar, Glucose, Stabiliser: Guar Gum, Flavouring, Food Colour :E102, E132, Sugar 97 %, Coating Gum: Gum Arabic 2% - Natural Flower 1% - Food Colouring: E141 - Aroma, Sugar, Emulsifier: **Soya** Lecithin, Vegetable Fat, Colour E102, Colour E110, Colour E129, COLOUR E132, Colour E133, Colour E171 (**Gluten**).
Allergen advice. For allergens, including cereals containing gluten, see ingredients in **bold**.

50%	50g	Callebaut White Chocolate
20%	20g	Chocolati - White Ganache
45.5%	9.1g	Callebaut White Chocolate
45.5%	9.1g	Cream, fluid, heavy whipping
9%	1.8g	Etilfrutto
15%	15g	Mint Paste
10%	10g	Mint Crunch Fragments
5%	5g	Green Swirls Transfer

Notes

Chocolati - Rose Turkish Delight



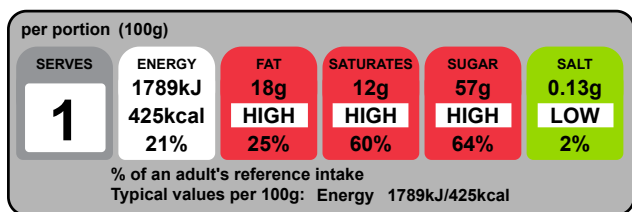
Nutrients

	per 100g	per 100 g serving
Energy	1789.0kJ	1789.0kJ
Energy	424.9kcal	424.9kcal
Fat	17.5g	17.5g
of which saturates	12.1g	12.1g
Carbohydrate	62.5g	62.5g
of which sugars	57.5g	57.5g
Added Sugar	0.0g	0.0g
Fibre	0.9g	0.9g
Protein	3.5g	3.5g
Salt	0.13g	0.13g
Sodium	52.5mg	52.5mg

Pack Size

Pack size	100.0g
Number of servings	1

Graphics



Typical values	per 100 g	per 100g serving
Energy	1789kJ	1789kJ
	425kcal	425kcal
Fat	18g	18g
of which saturates	12g	12g
Carbohydrate	62g	62g
of which sugars	57g	57g
Protein	3.5g	3.5g
Salt	0.13g	0.13g

Nutrition Facts
 1 servings per container
 Serving size 4oz (100g)

Amount per serving		
Calories		420
<small>% Daily Value*</small>		
Total fat	18g	22%
Saturated Fat	12g	60%
Trans Fat	0g	
Cholesterol	10mg	3%
Sodium	50mg	2%
Total Carbohydrate	63g	23%
Dietary Fiber	less than 1g	3%
Total Sugars	57g	
Includes 0g Added Sugars		0%
Protein	3g	
Vitamin D	0.1mcg	0%
Calcium	98mg	8%
Iron	1.7mg	10%
Potassium	188mg	4%

*The % Daily Value (DV) tells you how much a nutrient in a serving of food contributes to a daily diet. 2,000 calories a day is used for general nutrition advice.

Ingredients and Allergens

Turkish Delight, Sugar 42%, Cocoa Butter 24%, Whole **Milk** Powder 22.5%, Cocoa Mass 11.5%, Emulsifier, **Soya** Lecithin, Natural Vanilla Flavouring., Sugar Based Print Decoration (**Milk**, **Soya**).

Allergen advice. For allergens, including cereals containing gluten, see ingredients in **bold**.

50%	50g	Turkish delight, without nuts
45%	45g	Callebaut Milk Chocolate
5%	5g	Pin Stripe Transfer

Notes