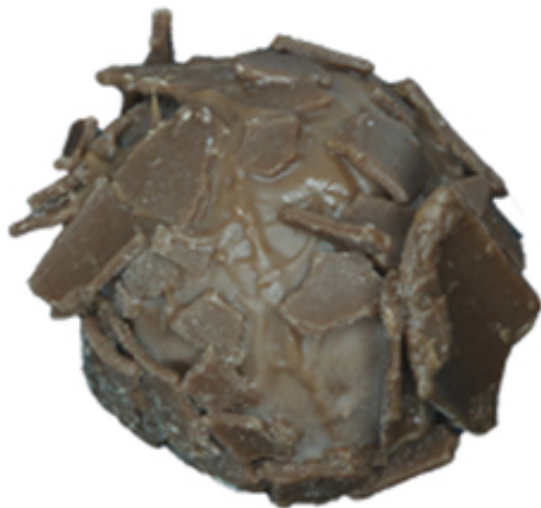


Chocolati - Rum Truffle



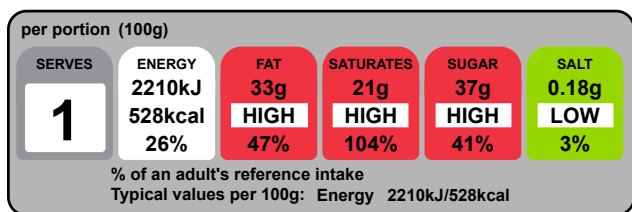
Nutrients

	per 100g	per 100 g serving
Energy	2209.7kJ	2209.7kJ
Energy	528.1kcal	528.1kcal
Fat	33.1g	33.1g
of which saturates	20.9g	20.9g
Carbohydrate	44.5g	44.5g
of which sugars	37.3g	37.3g
Added Sugar	0.0g	0.0g
Fibre	1.4g	1.4g
Protein	5.9g	5.9g
Salt	0.18g	0.18g
Sodium	71.1mg	71.1mg

Pack Size

Pack size	100.0g
Number of servings	1

Graphics



Typical values	per 100 g	per 100g serving
Energy	2210kJ 528kcal	2210kJ 528kcal
Fat	33g	33g
of which saturates	21g	21g
Carbohydrate	44g	44g
of which sugars	37g	37g
Protein	5.9g	5.9g
Salt	0.18g	0.18g

Nutrition Facts
 1 servings per container
Serving size 4oz (100g)

Amount per serving		
Calories		530
		<small>% Daily Value*</small>
Total fat	33g	42%
Saturated Fat	21g	104%
Trans Fat	0g	
Cholesterol	25mg	9%
Sodium	70mg	3%
Total Carbohydrate	46g	17%
Dietary Fiber	1g	5%
Total Sugars	37g	
Includes 0g Added Sugars		0%
Protein	6g	
Vitamin D	0.2mcg	2%
Calcium	159mg	10%
Iron	2.6mg	15%
Potassium	316mg	6%

*The % Daily Value (DV) tells you how much a nutrient in a serving of food contributes to a daily diet. 2,000 calories a day is used for general nutrition advice.

Ingredients and Allergens

Sugar 42%, Cocoa Butter 24%, Whole **Milk** Powder 22.5%, Cocoa Mass 11.5%, Emulsifier, **Soya** Lecithin, Natural Vanilla Flavouring., Chocolati - Milk Ganache (Sugar 42%, Cocoa Butter 24%, Whole **Milk** Powder 22.5%, Cocoa Mass 11.5%, Emulsifier, **Soya** Lecithin, Natural Vanilla Flavouring., Cream, Alcoholic Beverage - Alcohol 80%, Water.), Milk Chocolate Shavings, Rum Royal Navy 70%.

Allergen advice. For allergens, including cereals containing gluten, see ingredients in **bold**.

40%	40g	Callebaut Milk Chocolate
25%	25g	Callebaut Milk Chocolate
20%	20g	Chocolati - Milk Ganache
45.5%	9.1g	Callebaut Milk Chocolate
45.5%	9.1g	Cream, fluid, heavy whipping
9%	1.8g	Etilfrutto
10%	10g	Milk Chocolate Shavings
5%	5g	Rum Royal Navy 70%

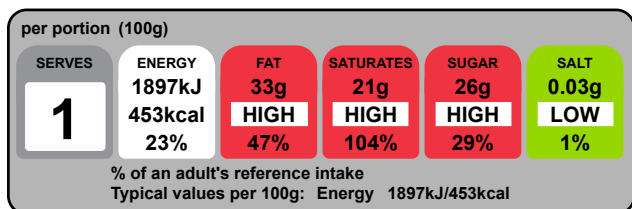
Notes

Chocolati - White Ganache

Pack Size

Pack size	100.0g
Number of servings	1

Graphics



Nutrients

	per 100g	per 100 g serving
Energy	1896.6kJ	1896.6kJ
Energy	453.4kcal	453.4kcal
Fat	32.7g	32.7g
of which saturates	20.8g	20.8g
Carbohydrate	26.5g	26.5g
of which sugars	26.4g	26.4g
Added Sugar	0.0g	0.0g
Fibre	0.0g	0.0g
Protein	4.0g	4.0g
Salt	0.03g	0.03g
Sodium	12.3mg	12.3mg

Typical values	per 100 g	per 100g serving
Energy	1897kJ 453kcal	1897kJ 453kcal
Fat	33g	33g
of which saturates	21g	21g
Carbohydrate	26g	26g
of which sugars	26g	26g
Protein	4.0g	4.0g
Salt	0.03g	0.03g

Nutrition Facts		
1 servings per container		
Serving size		4oz (100g)
Amount per serving		450
		% Daily Value*
Total fat	33g	42%
Saturated Fat	21g	104%
Trans Fat	0g	
Cholesterol	60mg	21%
Sodium	10mg	1%
Total Carbohydrate	26g	10%
Dietary Fiber	0g	0%
Total Sugars	26g	
Includes 0g Added Sugars		0%
Protein	4g	
Vitamin D	0.8mcg	4%
Calcium	125mg	10%
Iron	0.2mg	2%
Potassium	182mg	4%

*The % Daily Value (DV) tells you how much a nutrient in a serving of food contributes to a daily diet. 2,000 calories a day is used for general nutrition advice.

Ingredients and Allergens

Sugar 46.5%, Cocoa Butter 29.5%, Whole **Milk** Powder 23.5%, Emulsifier: **Soya** Lecithin, Natural Vanilla Flavouring., Cream, Alcoholic Beverage - Alcohol 80%, Water..

Allergen advice. For allergens, including cereals containing gluten, see ingredients in **bold**.

45.5%	45.5g	Callebaut White Chocolate
45.5%	45.5g	Cream, fluid, heavy whipping
9%	9g	Etilfrutto

Notes

generated by alacalc.com
10th September 2020 09:20

Chocolati - Irish Cream Truffle



Nutrients

	per 100g	per 100 g serving
Energy	2078.6kJ	2078.6kJ
Energy	496.8kcal	496.8kcal
Fat	33.6g	33.6g
of which saturates	21.3g	21.3g
Carbohydrate	38.1g	38.1g
of which sugars	37.5g	37.5g
Added Sugar	0.0g	0.0g
Fibre	0.9g	0.9g
Protein	5.4g	5.4g
Salt	0.12g	0.12g
Sodium	47.0mg	47.0mg

Pack Size

Pack size	100.0g
Number of servings	1

Graphics

per portion (100g)

SERVES	ENERGY	FAT	SATURATES	SUGAR	SALT
1	2079kJ 497kcal	34g HIGH	21g HIGH	37g HIGH	0.12g LOW
	25%	48%	107%	42%	2%

% of an adult's reference intake
Typical values per 100g: Energy 2079kJ/497kcal

Typical values	per 100 g	per 100g serving
Energy	2079kJ	2079kJ
	497kcal	497kcal
Fat	34g	34g
of which saturates	21g	21g
Carbohydrate	38g	38g
of which sugars	37g	37g
Protein	5.4g	5.4g
Salt	0.12g	0.12g

Nutrition Facts
 1 servings per container
Serving size 4oz (100g)

Amount per serving		
Calories	500	
		% Daily Value*
Total fat	34g	43%
Saturated Fat	21g	107%
Trans Fat	0g	
Cholesterol	40mg	14%
Sodium	45mg	2%
Total Carbohydrate	39g	14%
Dietary Fiber	less than 1g	3%
Total Sugars	37g	
Includes 0g Added Sugars		0%
Protein	5g	
Vitamin D	0.4mcg	2%
Calcium	163mg	15%
Iron	1.8mg	10%
Potassium	294mg	6%

*The % Daily Value (DV) tells you how much a nutrient in a serving of food contributes to a daily diet. 2,000 calories a day is used for general nutrition advice.

Ingredients and Allergens

Sugar 42%, Cocoa Butter 24%, Whole **Milk** Powder 22.5%, Cocoa Mass 11.5%, Emulsifier, **Soya** Lecithin, Natural Vanilla Flavouring., Chocolati - White Ganache (Sugar 46.5%, Cocoa Butter 29.5%, Whole **Milk** Powder 23.5%, Emulsifier: **Soya** Lecithin, Natural Vanilla Flavouring., Cream, Alcoholic Beverage - Alcohol 80%, Water.), Irish Cream (Cream, Whisky(58%), Water, Vanilla Extract), Sugar 46.5%, Cocoa Butter 29.5%, Whole **Milk** Powder 23.5%, Emulsifier: **Soya** Lecithin, Natural Vanilla Flavouring..
Allergen advice. For allergens, including cereals containing gluten, see ingredients in **bold**.

50%	50g	Callebaut Milk Chocolate
25%	25g	Chocolati - White Ganache
45.5%	11.4g	Callebaut White Chocolate
45.5%	11.4g	Cream, fluid, heavy whipping
9%	2.25g	Etilfrutto
15%	15g	Irish Cream
70%	10.5g	Cream, fluid, heavy whipping
25%	3.75g	Blended Scotch Whisky
5%	0.75g	Vanilla extract
10%	10g	Callebaut White Chocolate

Notes

Chocolati - Raspberry Ruffle Truffle



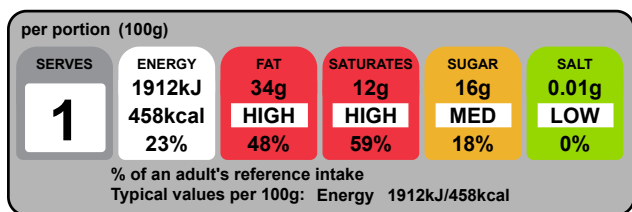
Nutrients

	per 100g	per 100 g serving
Energy	1911.6kJ	1911.6kJ
Energy	457.7kcal	457.7kcal
Fat	33.8g	33.8g
of which saturates	11.8g	11.8g
Carbohydrate	36.6g	36.6g
of which sugars	16.4g	16.4g
Added Sugar	0.0g	0.0g
Fibre	3.0g	3.0g
Protein	1.9g	1.9g
Salt	0.01g	0.01g
Sodium	5.3mg	5.3mg

Pack Size

Pack size	100.0g
Number of servings	1

Graphics



Typical values	per 100 g	per 100g serving
Energy	1912kJ	1912kJ
	458kcal	458kcal
Fat	34g	34g
of which saturates	12g	12g
Carbohydrate	37g	37g
of which sugars	16g	16g
Protein	1.9g	1.9g
Salt	0.01g	0.01g

Nutrition Facts	
<small>1 servings per container</small>	
Serving size	4oz (100g)

Amount per serving		
Calories		460
		<small>% Daily Value*</small>
Total fat	34g	43%
Saturated Fat	12g	59%
Trans Fat	0g	
Cholesterol	15mg	4%
Sodium	5mg	0%
Total Carbohydrate	40g	14%
Dietary Fiber	3g	11%
Total Sugars	16g	
Includes 0g Added Sugars		0%
Protein	2g	
Vitamin D	0.2mcg	0%
Calcium	30mg	2%
Iron	0.7mg	4%
Potassium	162mg	4%

*The % Daily Value (DV) tells you how much a nutrient in a serving of food contributes to a daily diet. 2,000 calories a day is used for general nutrition advice.

Ingredients and Allergens

Sugar 39.5%, Cocoa Butter 21%, Cocoa Mass 39.5%, Cream Powder 2.5%, Emulsifier: **Soya** Lecithin <1%, May Contain Traces Of Nuts And **Milk** Products., Chocolati - White Ganache (Sugar 46.5%, Cocoa Butter 29.5%, Whole **Milk** Powder 23.5%, Emulsifier: **Soya** Lecithin, Natural Vanilla Flavouring., Cream, Alcoholic Beverage - Alcohol 80%, Water.), Raspberries, Raspberry Juice, Sugar, Glucose, Citric Acid, Stabiliser:guar Gum, Flavouring, Food Colours :E124, E151, Flavouring:Nature Identical, Coconut, Sugar 44%, Cocoa Butter 12%, Cocoa Mass 44%, Emulsifier, **Soya** Lecithin, Natural Vanilla Flavouring. (**Milk**), Raspberries.

Allergen advice. For allergens, including cereals containing gluten, see ingredients in **bold**.

40%	40g	Keylink - Truffle Spheres Plain Chocolate
20%	20g	Chocolati - White Ganache
45.5%	9.1g	Callebaut White Chocolate
45.5%	9.1g	Cream, fluid, heavy whipping
9%	1.8g	Etilfrutto
15%	15g	Raspberry Paste
10%	10g	Coconut, desiccated
10%	10g	Callebaut Dark Chocolate
5%	5g	Freeze Dried Raspberries

Notes