

Chocolati -Strawberry & Black pepper Truffle NF



Nutrients

	per 100g	per 100 g serving
Energy	0.0kJ	0.0kJ
Energy	0.0kcal	0.0kcal
Fat	0.0g	0.0g
of which saturates	0.0g	0.0g
Carbohydrate	0.0g	0.0g
of which sugars	0.0g	0.0g
Added Sugar	0.0g	0.0g
Fibre	0.0g	0.0g
Protein	0.0g	0.0g
Salt	0.00g	0.00g
Sodium	0.0mg	0.0mg

Pack Size

Pack size	100.0g
Number of servings	1

Graphics

per portion (100g)

SERVES	ENERGY	FAT	SATURATES	SUGAR	SALT
1	0kJ 0kcal 0%	0g LOW 0%	0g LOW 0%	0g LOW 0%	0g LOW 0%

% of an adult's reference intake
Typical values per 100g: Energy 0kJ/0kcal

Typical values	per 100 g	per 100g serving
Energy	0kJ 0kcal	0kJ 0kcal
Fat	0.0g	0.0g
of which saturates	0.0g	0.0g
Carbohydrate	0.0g	0.0g
of which sugars	0.0g	0.0g
Protein	0.0g	0.0g
Salt	0.00g	0.00g

Nutrition Facts
1 servings per container
Serving size 4oz (100g)

Amount per serving		0
Calories		
% Daily Value*		
Total fat	0g	0%
Saturated Fat	0g	0%
Trans Fat	0g	
Cholesterol	0mg	0%
Sodium	0mg	0%
Total Carbohydrate	0g	0%
Dietary Fiber	0g	0%
Total Sugars	0g	
Includes 0g Added Sugars		0%
Protein	0g	
Vitamin D	0.0mcg	0%
Calcium	0.0mg	0%
Iron	0.0mg	0%
Potassium	0.0mg	0%

*The % Daily Value (DV) tells you how much a nutrient in a serving of food contributes to a daily diet. 2,000 calories a day is used for general nutrition advice.

Ingredients and Allergens

Allergen advice. For allergens, including cereals containing gluten, see ingredients in **bold**.

Notes

generated by alacalc.com
10th September 2020 09:20

Chocolati - Cognac Truffle



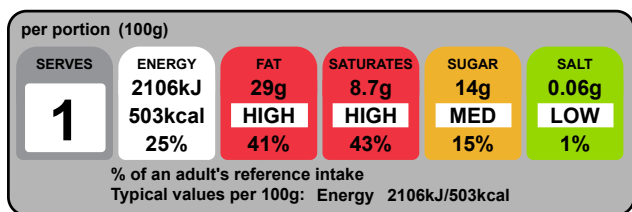
Nutrients

	per 100g	per 100 g serving
Energy	2106.2kJ	2106.2kJ
Energy	503.4kcal	503.4kcal
Fat	28.9g	28.9g
of which saturates	8.7g	8.7g
Carbohydrate	34.6g	34.6g
of which sugars	13.5g	13.5g
Added Sugar	0.0g	0.0g
Fibre	0.5g	0.5g
Protein	2.2g	2.2g
Salt	0.06g	0.06g
Sodium	24.7mg	24.7mg

Pack Size

Pack size	100.0g
Number of servings	1

Graphics



Typical values	per 100 g	per 100g serving
Energy	2106kJ 503kcal	2106kJ 503kcal
Fat	29g	29g
of which saturates	8.7g	8.7g
Carbohydrate	35g	35g
of which sugars	14g	14g
Protein	2.2g	2.2g
Salt	0.06g	0.06g

Nutrition Facts
 1 servings per container
Serving size 4oz (100g)

Amount per serving		
Calories		500
		<small>% Daily Value*</small>
Total fat	29g	37%
Saturated Fat	9g	43%
Trans Fat	0g	
Cholesterol	20mg	6%
Sodium	25mg	1%
Total Carbohydrate	35g	13%
Dietary Fiber	less than 1g	2%
Total Sugars	14g	
Includes 0g Added Sugars		0%
Protein	2g	
Vitamin D	0.2mcg	2%
Calcium	62mg	4%
Iron	0.9mg	6%
Potassium	120mg	2%

*The % Daily Value (DV) tells you how much a nutrient in a serving of food contributes to a daily diet. 2,000 calories a day is used for general nutrition advice.

Ingredients and Allergens

Sugar 44%, Cocoa Butter 28%, Whole **Milk** Powder 17.5%, Cocoa Mass 7.5%, Cream Powder 2.5%, Emulsifier: **Soya** Lecithin <1%, May Contain Traces Of Nuts., Chocolati - Milk Ganache (Sugar 42%, Cocoa Butter 24%, Whole **Milk** Powder 22.5%, Cocoa Mass 11.5%, Emulsifier, **Soya** Lecithin, Natural Vanilla Flavouring., Cream, Alcoholic Beverage - Alcohol 80%, Water.), Sugar 42%, Cocoa Butter 24%, Whole **Milk** Powder 22.5%, Cocoa Mass 11.5%, Emulsifier, **Soya** Lecithin, Natural Vanilla Flavouring., Alcoholic Beverage - Alcohol 80%, Water., Brandy St Remy 60%. Allergen advice. For allergens, including cereals containing gluten, see ingredients in **bold**.

40%	40g	Keylink - Truffle Spheres Milk Chocolate
25%	25g	Chocolati - Milk Ganache
45.5%	11.4g	Callebaut Milk Chocolate
45.5%	11.4g	Cream, fluid, heavy whipping
9%	2.25g	Etilfrutto
15%	15g	Callebaut Milk Chocolate
10%	10g	Etilfrutto
10%	10g	Brandy St Remy 60%

Notes

Chocolati - Coconut Truffle



Nutrients

	per 100g	per 100 g serving
Energy	2299.3kJ	2299.3kJ
Energy	550.4kcal	550.4kcal
Fat	37.2g	37.2g
of which saturates	15.1g	15.1g
Carbohydrate	45.5g	45.5g
of which sugars	24.3g	24.3g
Added Sugar	0.0g	0.0g
Fibre	1.4g	1.4g
Protein	2.8g	2.8g
Salt	0.01g	0.01g
Sodium	5.8mg	5.8mg

Pack Size

Pack size	100.0g
Number of servings	1

Graphics

per portion (100g)

SERVES	ENERGY	FAT	SATURATES	SUGAR	SALT
1	2299kJ 550kcal 28%	37g HIGH 53%	15g HIGH 76%	24g HIGH 27%	0.01g LOW 0%

% of an adult's reference intake
Typical values per 100g: Energy 2299kJ/550kcal

Typical values	per 100 g	per 100g serving
Energy	2299kJ 550kcal	2299kJ 550kcal
Fat	37g	37g
of which saturates	15g	15g
Carbohydrate	46g	46g
of which sugars	24g	24g
Protein	2.8g	2.8g
Salt	0.01g	0.01g

Nutrition Facts
1 servings per container
Serving size 4oz (100g)

Amount per serving		
Calories	550	
		% Daily Value*
Total fat	37g	48%
Saturated Fat	15g	76%
Trans Fat	0g	
Cholesterol	15mg	5%
Sodium	5mg	0%
Total Carbohydrate	47g	17%
Dietary Fiber	1g	5%
Total Sugars	24g	
Includes 0g Added Sugars		0%
Protein	3g	
Vitamin D	0.2mcg	0%
Calcium	74mg	6%
Iron	0.5mg	2%
Potassium	170mg	4%

*The % Daily Value (DV) tells you how much a nutrient in a serving of food contributes to a daily diet. 2,000 calories a day is used for general nutrition advice.

Ingredients and Allergens

Sugar 44%, Cocoa Butter 34%, Whole **Milk** Powder 21%, Cream Powder 2.5%, Emulsifier: **Soya** Lecithin <1%, Natural Vanilla <0.5%, May Contain Traces Of Nuts., Sugar 46.5%, Cocoa Butter 29.5%, Whole **Milk** Powder 23.5%, Emulsifier: **Soya** Lecithin, Natural Vanilla Flavouring., Chocolati - White Ganache (Sugar 46.5%, Cocoa Butter 29.5%, Whole **Milk** Powder 23.5%, Emulsifier: **Soya** Lecithin, Natural Vanilla Flavouring., Cream, Alcoholic Beverage - Alcohol 80%, Water.), Coconut, Sugar, Coconut Pulp And And Milk 34%, Glucose Syrup, Natural Flavourings, Stabilizers: E140 (locust Bean Gum) E440 (Pectin), Maltodextrins, Milk Proteins.

Allergen advice. For allergens, including cereals containing gluten, see ingredients in **bold**.

40%	40g	Keylink - Truffle Spheres White Chocolate
25%	25g	Callebaut White Chocolate
15%	15g	Chocolati - White Ganache
45.5%	6.83g	Callebaut White Chocolate
45.5%	6.83g	Cream, fluid, heavy whipping
9%	1.35g	Etilfrutto
10%	10g	Coconut, desiccated
10%	10g	Coconut paste with bits

Notes

Chocolati - Champagne Truffle



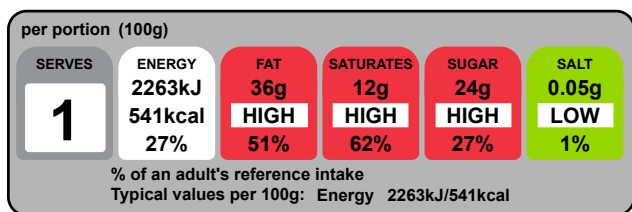
Nutrients

	per 100g	per 100 g serving
Energy	2263.2kJ	2263.2kJ
Energy	540.9kcal	540.9kcal
Fat	35.6g	35.6g
of which saturates	12.5g	12.5g
Carbohydrate	41.3g	41.3g
of which sugars	24.3g	24.3g
Added Sugar	0.0g	0.0g
Fibre	0.0g	0.0g
Protein	2.5g	2.5g
Salt	0.05g	0.05g
Sodium	18.4mg	18.4mg

Pack Size

Pack size	100.0g
Number of servings	1

Graphics



Typical values	per 100 g	per 100g serving
Energy	2263kJ 541kcal	2263kJ 541kcal
Fat	36g	36g
of which saturates	12g	12g
Carbohydrate	41g	41g
of which sugars	24g	24g
Protein	2.5g	2.5g
Salt	0.05g	0.05g

Nutrition Facts
 1 servings per container
 Serving size 4oz (100g)

Amount per serving		
Calories		540
		<small>% Daily Value*</small>
Total fat	36g	46%
Saturated Fat	12g	62%
Trans Fat	0g	
Cholesterol	25mg	8%
Sodium	20mg	1%
Total Carbohydrate	41g	15%
Dietary Fiber	0g	0%
Total Sugars	24g	
Includes 0g Added Sugars		0%
Protein	3g	
Vitamin D	0.2mcg	2%
Calcium	122mg	10%
Iron	0.2mg	0%
Potassium	174mg	4%

*The % Daily Value (DV) tells you how much a nutrient in a serving of food contributes to a daily diet. 2,000 calories a day is used for general nutrition advice.

Ingredients and Allergens

Sugar 44%, Cocoa Butter 34%, Whole **Milk** Powder 21%, Cream Powder 2.5%, Emulsifier: **Soya** Lecithin <1%, Natural Vanilla <0.5%, May Contain Traces Of Nuts., Sugar 46.5%, Cocoa Butter 29.5%, Whole **Milk** Powder 23.5%, Emulsifier: **Soya** Lecithin, Natural Vanilla Flavouring., Chocolati - White Ganache (Sugar 46.5%, Cocoa Butter 29.5%, Whole **Milk** Powder 23.5%, Emulsifier: **Soya** Lecithin, Natural Vanilla Flavouring., Cream, Alcoholic Beverage - Alcohol 80%, Water.), Sugar 48%, Cocoa Butter 27.5%, Whole **Milk** Powder 24%, Emulsifier: **Soya** Lecithin, Natural Vanilla Flavouring, Cream 24%, Marc De Champagne 7.0%, Sugar 6.5%, Concentrated Whey 3.0%, **Milk** Proteins.. Allergen advice. For allergens, including cereals containing gluten, see ingredients in **bold**.

40%	40g	Keylink - Truffle Spheres White Chocolate
25%	25g	Callebaut White Chocolate
25%	25g	Chocolati - White Ganache
45.5%	11.4g	Callebaut White Chocolate
45.5%	11.4g	Cream, fluid, heavy whipping
9%	2.25g	Etilfrutto
10%	10g	Marc De Champagne Cream

Notes