

Chocolati - Dark Stem Ginger



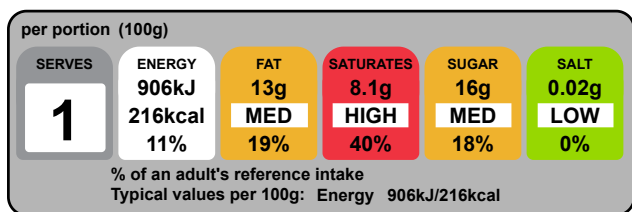
Nutrients

	per 100g	per 100 g serving
Energy	905.7kJ	905.7kJ
Energy	215.8kcal	215.9kcal
Fat	13.2g	13.2g
of which saturates	8.1g	8.1g
Carbohydrate	21.4g	21.4g
of which sugars	16.4g	16.4g
Added Sugar	0.0g	0.0g
Fibre	3.8g	3.8g
Protein	2.9g	2.9g
Salt	0.02g	0.02g
Sodium	8.5mg	8.5mg

Pack Size

Pack size	100.0g
Number of servings	1

Graphics



Typical values	per 100 g	per 100g serving
Energy	906kJ 216kcal	906kJ 216kcal
Fat	13g	13g
of which saturates	8.1g	8.1g
Carbohydrate	21g	21g
of which sugars	16g	16g
Protein	2.9g	2.9g
Salt	0.02g	0.02g

Nutrition Facts	
1 servings per container	
Serving size	4oz (100g)

Amount per serving		220
Calories		
% Daily Value*		
Total fat	13g	17%
Saturated Fat	8g	40%
Trans Fat	0g	
Cholesterol	0mg	0%
Sodium	10mg	0%
Total Carbohydrate	25g	9%
Dietary Fiber	4g	14%
Total Sugars	16g	
Includes 0g Added Sugars		0%
Protein	3g	
Vitamin D	0.0mcg	0%
Calcium	20mg	2%
Iron	1.5mg	8%
Potassium	476mg	10%

*The % Daily Value (DV) tells you how much a nutrient in a serving of food contributes to a daily diet. 2,000 calories a day is used for general nutrition advice.

Ingredients and Allergens

Ginger, Sugar 44%, Cocoa Butter 12%, Cocoa Mass 44%, Emulsifier, **Soya** Lecithin, Natural Vanilla Flavouring. (**Milk**). Allergen advice. For allergens, including cereals containing gluten, see ingredients in **bold**.

65%	65g	Ginger, fresh
35%	35g	Callebaut Dark Chocolate

Notes

generated by alacalc.com
10th September 2020 09:20

Chocolati Rum and Raisin



Nutrients

	per 100g	per 100 g serving
Energy	1848.9kJ	1848.9kJ
Energy	441.4kcal	441.4kcal
Fat	29.0g	29.0g
of which saturates	18.3g	18.3g
Carbohydrate	36.3g	36.3g
of which sugars	35.2g	35.2g
Added Sugar	0.0g	0.0g
Fibre	2.5g	2.5g
Protein	4.0g	4.0g
Salt	0.02g	0.02g
Sodium	7.5mg	7.5mg

Pack Size

Pack size	100.0g
Number of servings	1

Graphics

per portion (100g)

SERVES	ENERGY	FAT	SATURATES	SUGAR	SALT
1	1849kJ 441kcal	29g HIGH	18g HIGH	35g HIGH	0.02g LOW
	22%	41%	92%	39%	0%

% of an adult's reference intake
Typical values per 100g: Energy 1849kJ/441kcal

Typical values	per 100 g	per 100g serving
Energy	1849kJ	1849kJ
	441kcal	441kcal
Fat	29g	29g
of which saturates	18g	18g
Carbohydrate	36g	36g
of which sugars	35g	35g
Protein	4.0g	4.0g
Salt	0.02g	0.02g

Nutrition Facts
 1 servings per container
Serving size 4oz (100g)

Amount per serving		440
Calories		
		% Daily Value*
Total fat	29g	37 %
Saturated Fat	18g	92 %
Trans Fat	0g	
Cholesterol	30mg	11 %
Sodium	10mg	0 %
Total Carbohydrate	39g	14 %
Dietary Fiber	3g	9 %
Total Sugars	35g	
Includes 0g Added Sugars		0 %
Protein	4g	
Vitamin D	0.4mcg	2 %
Calcium	86mg	6 %
Iron	1.3mg	8 %
Potassium	363mg	8 %

*The % Daily Value (DV) tells you how much a nutrient in a serving of food contributes to a daily diet. 2,000 calories a day is used for general nutrition advice.

Ingredients and Allergens

Chocolati - Dark Ganache (Sugar 44%, Cocoa Butter 12%, Cocoa Mass 44%, Emulsifier, **Soya** Lecithin, Natural Vanilla Flavouring. (**Milk**), Cream, Alcoholic Beverage - Alcohol 80%, Water.), Sugar 46.5%, Cocoa Butter 29.5%, Whole **Milk** Powder 23.5%, Emulsifier: **Soya** Lecithin, Natural Vanilla Flavouring., Currants (**Sulphites**), Sugar 44%, Cocoa Butter 12%, Cocoa Mass 44%, Emulsifier, **Soya** Lecithin, Natural Vanilla Flavouring. (**Milk**), Dark Brown, Mobile Liquid Composed Of Flavouring Preparations, Flavouring Substances , Smoke Flavouring, Propylene Glycol E1520..

Allergen advice. For allergens, including cereals containing gluten, see ingredients in **bold**.

50%	50g	Chocolati - Dark Ganache
45.5%	22.8g	Callebaut Dark Chocolate
45.5%	22.8g	Cream, fluid, heavy whipping
9%	4.5g	Etilfrutto
25%	25g	Callebaut White Chocolate
10%	10g	Currants
10%	10g	Callebaut Dark Chocolate
5%	5g	MSK Rum & Raisin Drops

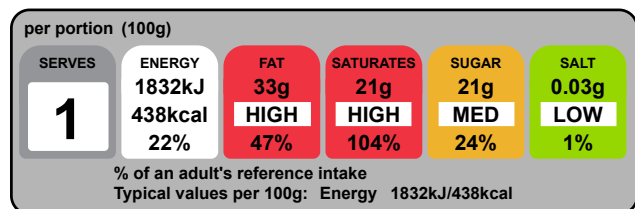
Notes

Chocolati - Dark Ganache

Pack Size

Pack size	100.0g
Number of servings	1

Graphics



Typical values	per 100 g	per 100g serving
Energy	1832kJ 438kcal	1832kJ 438kcal
Fat	33g	33g
of which saturates	21g	21g
Carbohydrate	23g	23g
of which sugars	21g	21g
Protein	3.6g	3.6g
Salt	0.03g	0.03g

Nutrients

	per 100g	per 100 g serving
Energy	1831.9kJ	1831.9kJ
Energy	437.9kcal	437.9kcal
Fat	32.8g	32.8g
of which saturates	20.8g	20.8g
Carbohydrate	22.5g	22.5g
of which sugars	21.3g	21.3g
Added Sugar	0.0g	0.0g
Fibre	3.3g	3.3g
Protein	3.6g	3.6g
Salt	0.03g	0.03g
Sodium	12.3mg	12.3mg

Nutrition Facts		
1 servings per container		
Serving size		4oz (100g)
Amount per serving		440
		% Daily Value*
Total fat	33g	42%
Saturated Fat	21g	104%
Trans Fat	0g	
Cholesterol	50mg	17%
Sodium	10mg	1%
Total Carbohydrate	26g	9%
Dietary Fiber	3g	12%
Total Sugars	21g	
Includes 0g Added Sugars		0%
Protein	4g	
Vitamin D	0.7mcg	4%
Calcium	43mg	4%
Iron	1.5mg	8%
Potassium	312mg	6%

*The % Daily Value (DV) tells you how much a nutrient in a serving of food contributes to a daily diet. 2,000 calories a day is used for general nutrition advice.

Ingredients and Allergens

Sugar 44%, Cocoa Butter 12%, Cocoa Mass 44%, Emulsifier, **Soya** Lecithin, Natural Vanilla Flavouring. (**Milk**), Cream, Alcoholic Beverage - Alcohol 80%, Water..

Allergen advice. For allergens, including cereals containing gluten, see ingredients in **bold**.

45.5%	45.5g	Callebaut Dark Chocolate
45.5%	45.5g	Cream, fluid, heavy whipping
9%	9g	Etilfrutto

Notes

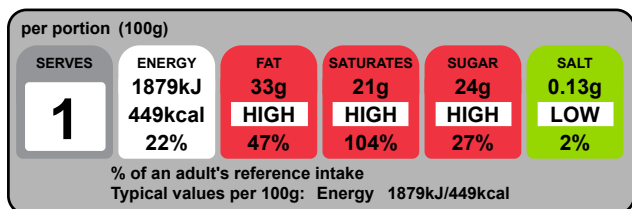
generated by alacalc.com
10th September 2020 09:20

Chocolati - Milk Ganache

Pack Size

Pack size	100.0g
Number of servings	1

Graphics



Typical values	per 100 g	per 100g serving
Energy	1879kJ 449kcal	1879kJ 449kcal
Fat	33g	33g
of which saturates	21g	21g
Carbohydrate	25g	25g
of which sugars	24g	24g
Protein	4.5g	4.5g
Salt	0.13g	0.13g

Nutrients

	per 100g	per 100 g serving
Energy	1879.5kJ	1879.5kJ
Energy	449.3kcal	449.3kcal
Fat	32.9g	32.9g
of which saturates	20.9g	20.9g
Carbohydrate	24.5g	24.5g
of which sugars	24.1g	24.1g
Added Sugar	0.0g	0.0g
Fibre	0.9g	0.9g
Protein	4.5g	4.5g
Salt	0.13g	0.13g
Sodium	49.6mg	49.6mg

Nutrition Facts	
1 servings per container	
Serving size	4oz (100g)
Amount per serving	
Calories	450
% Daily Value*	
Total fat 33g	42%
Saturated Fat 21g	104%
Trans Fat 0g	
Cholesterol 60mg	21%
Sodium 50mg	2%
Total Carbohydrate 25g	9%
Dietary Fiber less than 1g	3%
Total Sugars 24g	
Includes 0g Added Sugars	0%
Protein 4g	
Vitamin D 0.8mcg	4%
Calcium 124mg	10%
Iron 1.6mg	10%
Potassium 232mg	4%

*The % Daily Value (DV) tells you how much a nutrient in a serving of food contributes to a daily diet. 2,000 calories a day is used for general nutrition advice.

Ingredients and Allergens

Sugar 42%, Cocoa Butter 24%, Whole **Milk** Powder 22.5%, Cocoa Mass 11.5%, Emulsifier, **Soya** Lecithin, Natural Vanilla Flavouring., Cream, Alcoholic Beverage - Alcohol 80%, Water..

Allergen advice. For allergens, including cereals containing gluten, see ingredients in **bold**.

45.5%	45.5g	Callebaut Milk Chocolate
45.5%	45.5g	Cream, fluid, heavy whipping
9%	9g	Etilfrutto

Notes

generated by alacalc.com
10th September 2020 09:20