

Chocolati - Strawberry Cream - White chocolate

Nutrients

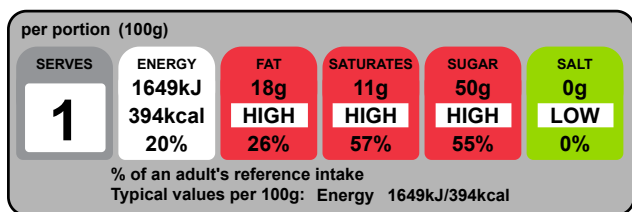


	per 100g	per 100 g serving
Energy	1648.9kJ	1648.9kJ
Energy	394.1kcal	394.1kcal
Fat	17.9g	17.9g
of which saturates	11.3g	11.3g
Carbohydrate	55.1g	55.1g
of which sugars	49.6g	49.6g
Added Sugar	0.0g	0.0g
Fibre	0.0g	0.0g
Protein	3.0g	3.0g
Salt	0.00g	0.00g
Sodium	0.6mg	0.6mg

Pack Size

Pack size	100.0g
Number of servings	1

Graphics



Typical values	per 100 g	per 100g serving
Energy	1649kJ	1649kJ
	394kcal	394kcal
Fat	18g	18g
of which saturates	11g	11g
Carbohydrate	55g	55g
of which sugars	50g	50g
Protein	3.0g	3.0g
Salt	0.00g	0.00g

Nutrition Facts
 1 servings per container
Serving size 4oz (100g)

Amount per serving		
Calories	390	
		% Daily Value*
Total fat	18g	23%
Saturated Fat	11g	57%
Trans Fat	0g	
Cholesterol	10mg	4%
Sodium	0mg	0%
Total Carbohydrate	55g	20%
Dietary Fiber	0g	0%
Total Sugars	50g	
Includes 0g Added Sugars		0%
Protein	3g	
Vitamin D	0.1mcg	0%
Calcium	105mg	8%
Iron	0.1mg	0%
Potassium	153mg	4%

*The % Daily Value (DV) tells you how much a nutrient in a serving of food contributes to a daily diet. 2,000 calories a day is used for general nutrition advice.

Ingredients and Allergens

Sugar 46.5%, Cocoa Butter 29.5%, Whole **Milk** Powder 23.5%, Emulsifier: **Soya** Lecithin, Natural Vanilla Flavouring., Sugar, Strawberry Juice, Glucose, Citric Acid, Stabiliser; Guar Gum, Food Colours: E124, Flavouring: Nature Identical, Sugar, Glucose Syrup, Water (**Wheat**), Water.

Allergen advice. For allergens, including cereals containing gluten, see ingredients in **bold**.

50%	50g	Callebaut White Chocolate
20%	20g	Strawberry paste
15%	15g	HB Fondant Red Tape
15%	15g	Water, tap, drinking

Notes

Chocolati - Strawberry Cream - Dark chocolate



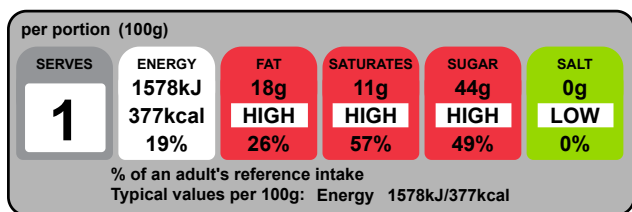
Nutrients

	per 100g	per 100 g serving
Energy	1577.8kJ	1577.8kJ
Energy	377.1kcal	377.1kcal
Fat	18.1g	18.1g
of which saturates	11.3g	11.3g
Carbohydrate	50.8g	50.8g
of which sugars	44.0g	44.0g
Added Sugar	0.0g	0.0g
Fibre	3.6g	3.6g
Protein	2.5g	2.5g
Salt	0.00g	0.00g
Sodium	0.6mg	0.6mg

Pack Size

Pack size	100.0g
Number of servings	1

Graphics



Typical values	per 100 g	per 100g serving
Energy	1578kJ 377kcal	1578kJ 377kcal
Fat	18g	18g
of which saturates	11g	11g
Carbohydrate	51g	51g
of which sugars	44g	44g
Protein	2.5g	2.5g
Salt	0.00g	0.00g

Nutrition Facts	
<small>1 servings per container</small>	
Serving size	4oz (100g)

Amount per serving		
Calories	380	
<small>% Daily Value*</small>		
Total fat	18g	23%
Saturated Fat	11g	57%
Trans Fat	0g	
Cholesterol	0mg	0%
Sodium	0mg	0%
Total Carbohydrate	54g	20%
Dietary Fiber	4g	13%
Total Sugars	44g	
Includes 0g Added Sugars		0%
Protein	3g	
Vitamin D	0.0mcg	0%
Calcium	15mg	2%
Iron	1.6mg	8%
Potassium	295mg	6%

*The % Daily Value (DV) tells you how much a nutrient in a serving of food contributes to a daily diet. 2,000 calories a day is used for general nutrition advice.

Ingredients and Allergens

Sugar 44%, Cocoa Butter 12%, Cocoa Mass 44%, Emulsifier, **Soya** Lecithin, Natural Vanilla Flavouring. (**Milk**), Sugar, Strawberry Juice, Glucose, Citric Acid, Stabiliser; Guar Gum, Food Colours: E124, Flavouring: Nature Identical, Sugar, Glucose Syrup, Water (**Wheat**), Water.
Allergen advice. For allergens, including cereals containing gluten, see ingredients in **bold**.

50%	50g	Callebaut Dark Chocolate
20%	20g	Strawberry paste
15%	15g	HB Fondant Red Tape
15%	15g	Water, tap, drinking

Notes

Chocolati - Strawberry Cream - Milk Chocolate



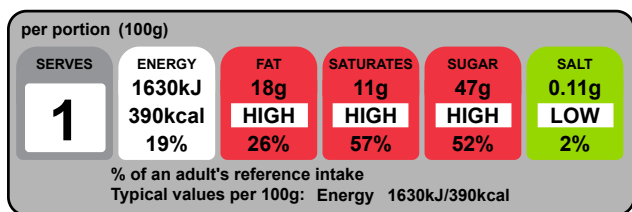
Nutrients

	per 100g	per 100 g serving
Energy	1630.1kJ	1630.1kJ
Energy	389.6kcal	389.6kcal
Fat	18.1g	18.1g
of which saturates	11.4g	11.4g
Carbohydrate	53.0g	53.0g
of which sugars	47.1g	47.1g
Added Sugar	0.0g	0.0g
Fibre	1.0g	1.0g
Protein	3.5g	3.5g
Salt	0.11g	0.11g
Sodium	41.7mg	41.7mg

Pack Size

Pack size	100.0g
Number of servings	1

Graphics



Typical values	per 100 g	per 100g serving
Energy	1630kJ 390kcal	1630kJ 390kcal
Fat	18g	18g
of which saturates	11g	11g
Carbohydrate	53g	53g
of which sugars	47g	47g
Protein	3.5g	3.5g
Salt	0.11g	0.11g

Nutrition Facts	
<small>1 servings per container</small>	
Serving size	4oz (100g)

Amount per serving		
Calories	390	
% Daily Value*		
Total fat	18g	23%
Saturated Fat	11g	57%
Trans Fat	0g	
Cholesterol	10mg	4%
Sodium	40mg	2%
Total Carbohydrate	54g	20%
Dietary Fiber	less than 1g	4%
Total Sugars	47g	
Includes 0g Added Sugars		0%
Protein	4g	
Vitamin D	0.1mcg	0%
Calcium	104mg	8%
Iron	1.8mg	10%
Potassium	207mg	4%

*The % Daily Value (DV) tells you how much a nutrient in a serving of food contributes to a daily diet. 2,000 calories a day is used for general nutrition advice.

Ingredients and Allergens

Sugar 42%, Cocoa Butter 24%, Whole **Milk** Powder 22.5%, Cocoa Mass 11.5%, Emulsifier, **Soya** Lecithin, Natural Vanilla Flavouring., Sugar, Strawberry Juice, Glucose, Citric Acid, Stabiliser; Guar Gum, Food Colours: E124, Flavouring: Nature Identical, Water, Sugar, Glucose Syrup, Water (**Wheat**).

Allergen advice. For allergens, including cereals containing gluten, see ingredients in **bold**.

50%	50g	Callebaut Milk Chocolate
20%	20g	Strawberry paste
15%	15g	Water, tap, drinking
15%	15g	HB Fondant Red Tape

Notes